

Product specification

Product hierarchy / Date
1143210 / 06.09.2016

Page 1 / 2

General product information

Product hierarchy: 1143210

Product description: VUL/SK24/12 REL
Closure fitting for tin plate container with 24mm REL-piercing. Two piece, PE made. Base with tamper evidence tear-off seal. Screw cap, ergonomic shaped, 12mm high, withbore seal.

Weight: 5,58 G +/-10%

Customer drawing no.: ENG-00-004385

Customer drawing tolerances relate to the results of measurement averages, except for ovality. Ovality tolerances depend upon transport conditions, packaging media, vibration and temperature.

Neck material: HDPE/PP

Neck finish drawing no.: ENG-00-001230

Containers must meet MUS VERPAKKINGEN BV drawing specifications.

Product properties

Components:	Resin LDPE General	Resin HDPE General
Pack. unit:	575X380X373 mm	
Qty/pack. unit:	3.500	0
Pallet:	1200X800 mm	
Pack. units/pallet	20	0

Storage

Min. storage temperature: 10 °C
Max. storage temperature: 28 °C

Pallets should be stored in a clean dry area away from UV light, smells and high temperature variations. Pallets should not be double stacked. Closures are to be used within 12 months after date of delivery.

Application

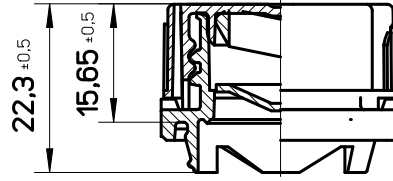
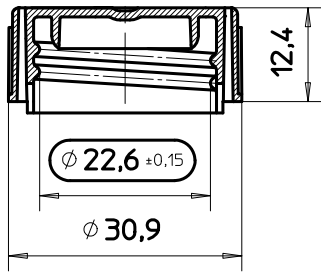
Min. application temperature: 18 °C

Max. application temperature: 28 °C

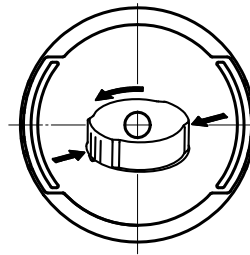
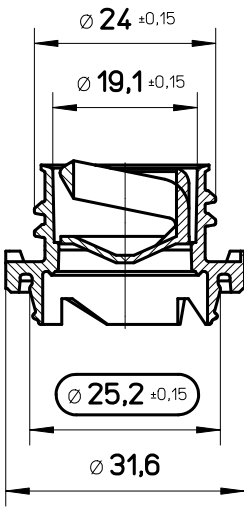
Minimum head pressure: 250,0 N

Meeting the above requirements does not absolve the customer from the requirement to set up the capping equipment as required and from carrying out compatibility tests between the applied closure and filled product. Technical assistance can be provided by MUS VERPAKKINGEN BV.

D



C



B

 - **gauge dimension**

Excerpt from DIN 16901 series 150

Postmolding ovality dimensions can be influenced by packaging and logistics
Nominal Diameters are defined as mean of two rectangular measurements

Dimension	0-3	3-6	6-10	10-15	15-22	22-30	30-40	40-53	53-70
Tolerance	$\pm 0,15$	$\pm 0,17$	$\pm 0,2$	$\pm 0,24$	$\pm 0,28$	$\pm 0,33$	$\pm 0,39$	$\pm 0,47$	$\pm 0,58$

Mus Verpakkingen BV				for internal use only			Sheet
				Import No.:			1
				Proj.No.			1 Sh.
				Art.No. PAR-00-0000161			
				This drawing is the property Mus Verpakkingen BV. It is confidential and must not be copied or shown to third parties.			
				Category Customer drawing			
				Title VUL / SK 24/12 REL			
				Master-Producthierarchy No. 1143210			
				Drawing No. ENG-00-004385			
				Scale: 1:1			
				Surface: metric			
				DIN ISO 1302 (Ra)			
				Date 25.07.2005 Name Lohmann			
				Date 08.03.2012 Name Gerf			
				DIN A4			
				Title block modified 08.03.12 JG			
Iss. Change				Date Name			

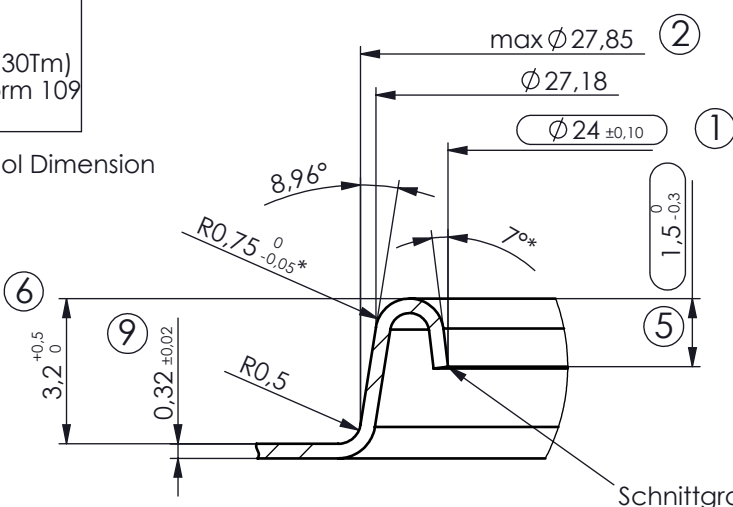
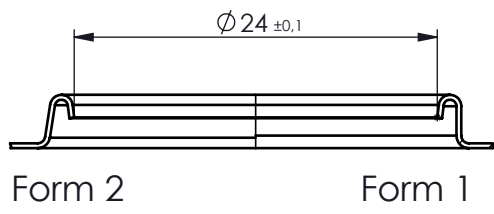
A

A

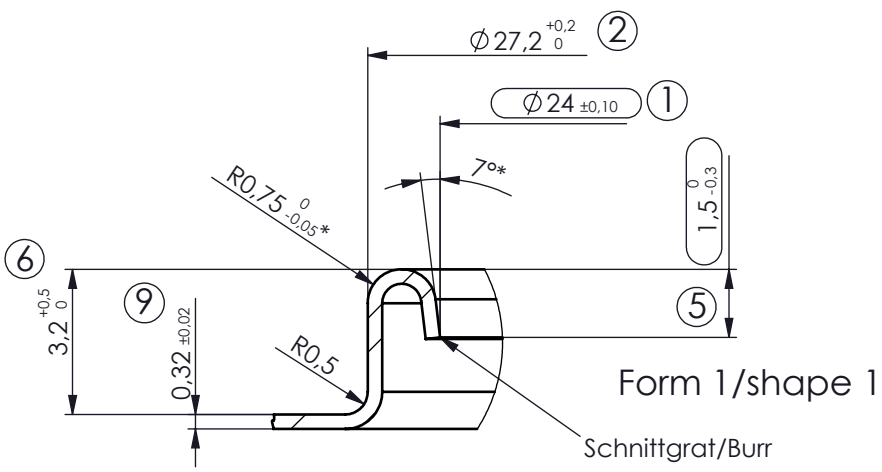
Einsteblech:
 nach Absprache
 Härte: 51±4 (HR 30Tm)
 Euro-Norm 109
 DIN EN: 13029

Tinplate-Blackplate:
 Gauge as agreed
 Hardness: 51± (HR 30Tm)
 Euro-Norm 109
 DIN EN: 13029

*Werkzeugmass/Tool Dimension



Form 2 /shape 2
(stapelfähig/nestable)



Form 1 /shape 1

Excerpt from DIN 16901 series 150

Dimension	0-3	3-6	6-10	10-15	15-22	22-30	30-40	40-53	53-70
Tolerance	±0,15	±0,17	±0,2	±0,24	±0,28	±0,33	±0,39	±0,47	±0,58

Mus Verpakkingen BV	Current Neck No.	NCK-00-000138	Sheet 1
	Prev. Neck No.	L1400.01	
	3D-Modell No.	ENG-00-012277	1 Sh.

Material: This drawing is the property of Mus Verpakkingen BV. It is confidential and must not be copied or shown to third parties.

Iss.	Change	Date	Name	Tolerances unless otherwise stated: DIN 16 901 150	DIN ISO 1302 (Ra)	Title: Finish/Aperture L-piercing 24 mm REL
				Date	Name	
				Scale: 1:1	metric	
				DIN A4		Drawing No.: ENG-00-001230 a
				Import No.:		L140001g