

Product specification

Product hierarchy / Date
1162121 / 06.09.2016

Page 1 / 2

General product information

Product hierarchy: 1162121
Product description: P2 Z
Extendable press-in closure for tin plate containers, two piece, for 42mm DIN-piercing, PE made. Flexible pull-up spout with tamper evidence tear-off seal and cylindrical insertion edge. Screw cap with bore seal and pull-up handle.
Weight: 10,94 G +/-10%
Customer drawing no.: ENG-00-004476
Customer drawing tolerances relate to the results of measurement averages, except for ovality. Ovality tolerances depend upon transport conditions, packaging media, vibration and temperature.
Neck material: HDPE/PP
Neck finish drawing no.: ENG-00-005079
Containers must meet BERICAP drawing specifications.

Product properties

Components:	Resin HDPE General	Resin EVA General	Resin Additive
Pack. unit:	575X380X373 mm		
Qty/pack. unit:	1.800	0	0
Pallet:	1200X800 mm		
Pack. units/pallet	20	0	0

Storage

Min. storage temperature: 10 °C
Max. storage temperature: 28 °C

Pallets should be stored in a clean dry area away from UV light, smells and high temperature variations. Pallets should not be double stacked. Closures are to be used within 12 months after date of delivery.

The characteristics of the product are additionally fixed in separate process-, inspection- and sampling plans. Not subject to our automated up-date service.

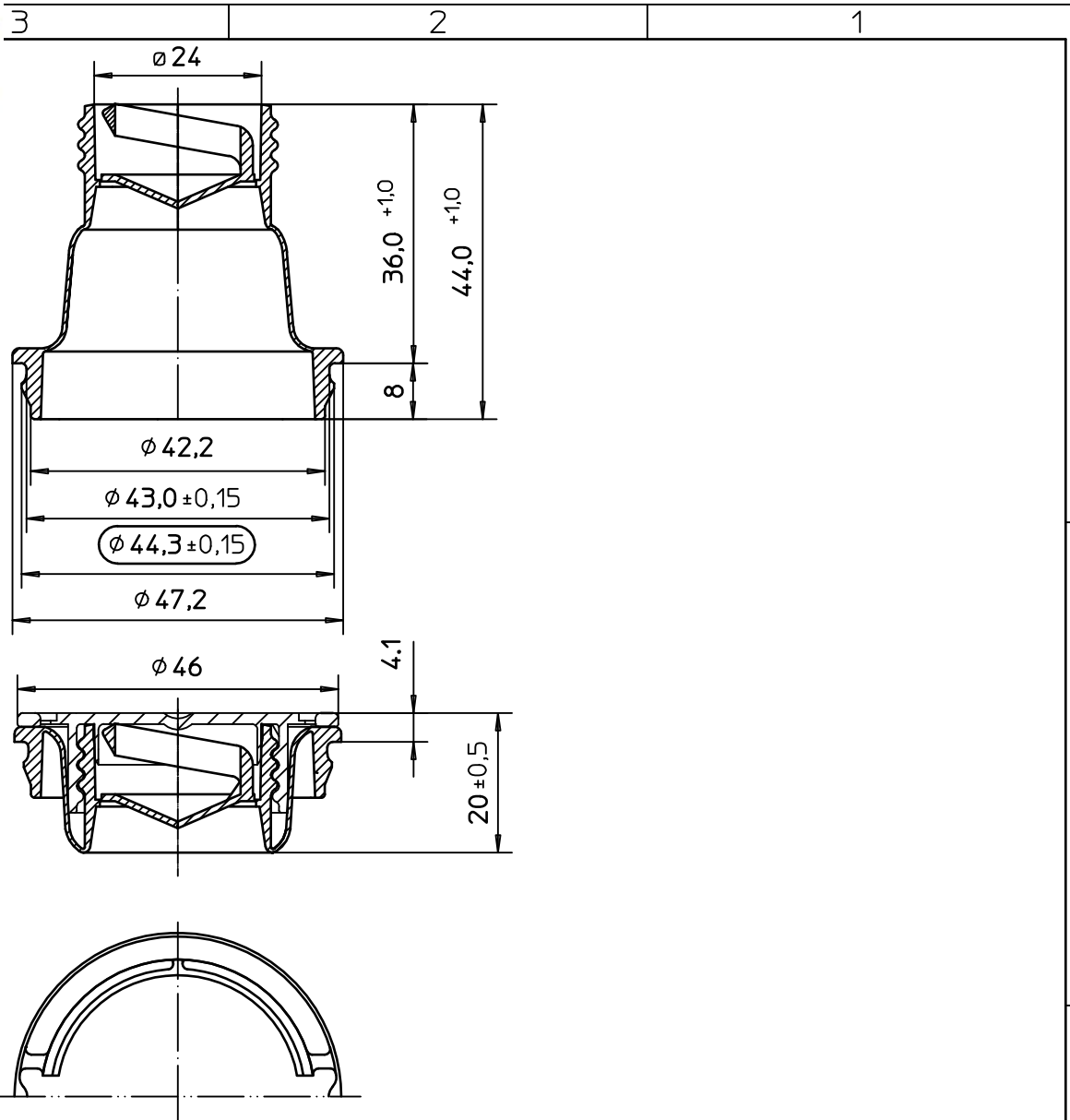
Application

Min. application temperature: 18 °C

Max. application temperature: 28 °C

Minimum head pressure: 300,0 N

Meeting the above requirements does not absolve the customer from the requirement to set up the capping equipment as required and from carrying out compatibility tests between the applied closure and filled product. Technical assistance can be provided by MUS VERPAKKINGEN BV.



Ø 44,3 ± 0,15 - gauge dimension

Excerpt from DIN 16901 series 150 Postmolding ovality dimensions can be influenced by packaging and logistics
Nominal Diameters are defined as mean of two rectangular measurements

Dimension	0-3	3-6	6-10	10-15	15-22	22-30	30-40	40-53	53-70
Tolerance	±0,15	±0,17	±0,2	±0,24	±0,28	±0,33	±0,39	±0,47	±0,58

Prod-Hierarchy No.		1162121	Sheet X
Art.No.		PAR-00-0000209	
Proj.No.			X Sh.

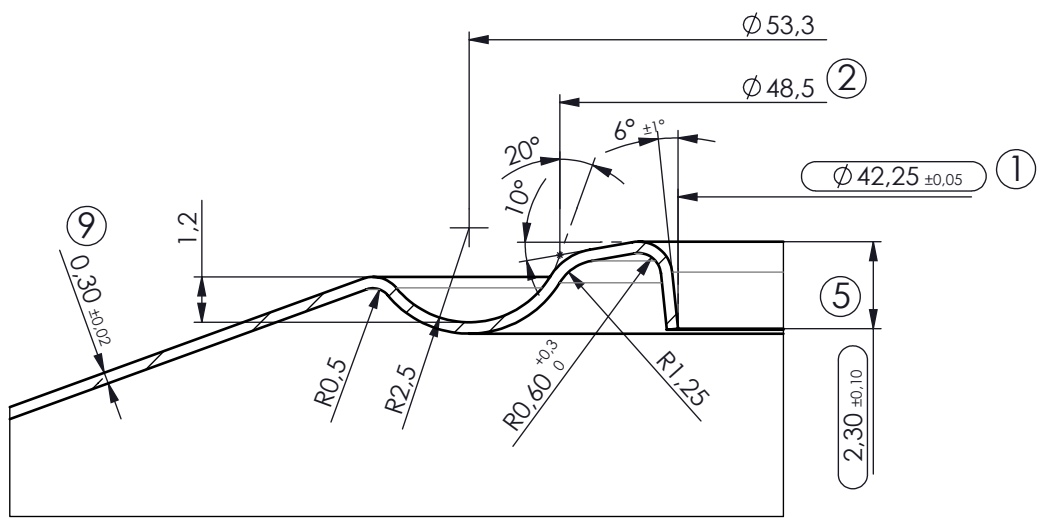
Tolerances unless otherwise stated:		Surface:		This drawing is the property of Mus Verpakkingen. It is confidential and must not be copied or shown to third parties.
DIN 16 901 150		DIN ISO 1302 (Ra)		

Date		Name		Title: Foldable flex spout P2 Z
Drawn				
Approved				

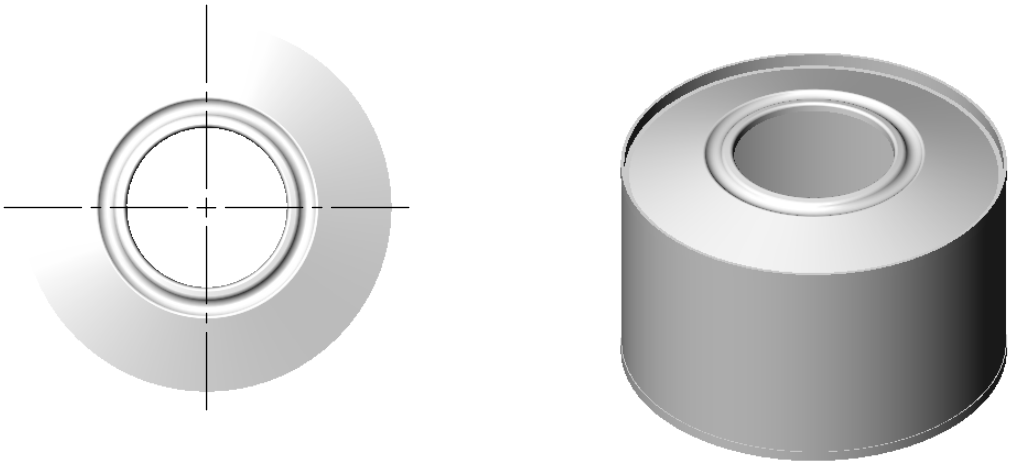
Scale:		metric		Category: Customer drawing
1:1 (1:1)				
DIN A4		Drawing No.:		ENG-00-004476 a
Repl.for:		K162121b		

iss.	Change	Date	Name
		16.10.06	HL

D



C



B

Excerpt from DIN 16901 series 150

Dimension	0-3	3-6	6-10	10-15	15-22	22-30	30-40	40-53	53-70
Tolerance	±0,15	±0,17	±0,2	±0,24	±0,28	±0,33	±0,39	±0,47	±0,58

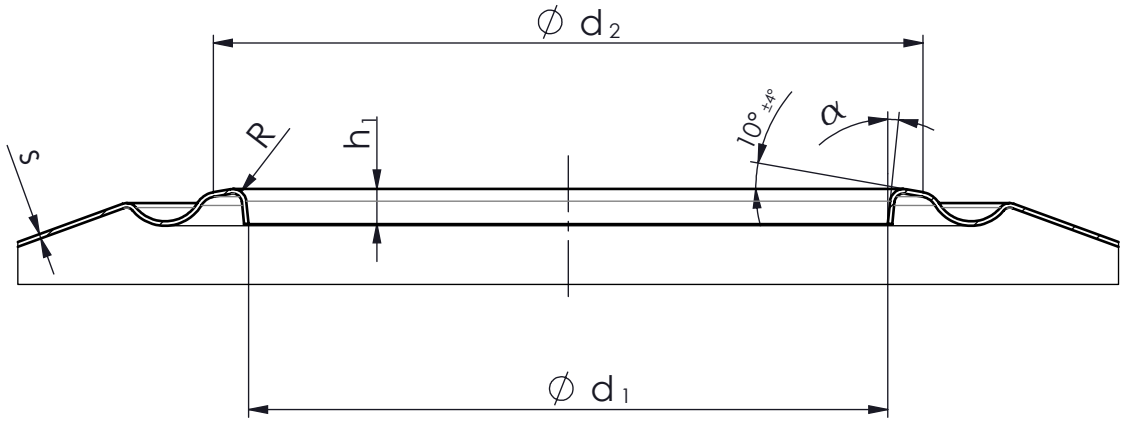
	Current Neck No.	NCK-00-000004	Sheet 1
	Prev. Neck No.	DIN 2035 - P	
	3D-Modell No.	ENG-00-010370	2 Sh.

Material

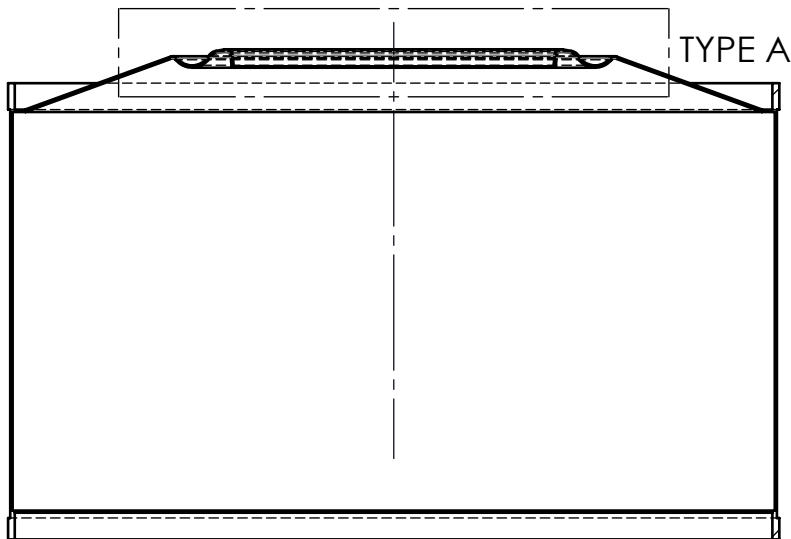
Tolerances unless otherwise stated:
 DIN 16 901 150 DIN ISO 1302 (Ra)
 This drawing is the property of Mus Verpakkingen BV. It is confidential and must not be copied or shown to third parties.

A

b Aufnahme in SW a modified Iss. Change	11.02.08 18.10.05 Date	HL FG Name	Drawn	Date	Name	Title: Can P-Lochung 42 mm DIN
			Approved			Category: Finish-/Aperture drawing
Scale: 1:1		metric		Drawing No.: ENG-00-005079 b		
		DIN A4		Import No.: OBERBODENLOCHUNG_P_01_04_75		



TYPE A



Excerpt from DIN 16901 series 150

Dimension	0-3	3-6	6-10	10-15	15-22	22-30	30-40	40-53	53-70
Tolerance	$\pm 0,15$	$\pm 0,17$	$\pm 0,2$	$\pm 0,24$	$\pm 0,28$	$\pm 0,33$	$\pm 0,39$	$\pm 0,47$	$\pm 0,58$

	Current Neck No.	NCK-00-000004	Sheet
	Prev. Neck No.	DIN 2035 - P	
	3D-Modell No.	ENG-00-010370	2 Sh.

Material

Tolerances unless otherwise stated:
 DIN 16 901 150 DIN ISO 1302 (Ra)

This drawing is the property of Mus Verpakkingen BV. It is confidential and must not be copied or shown to third parties.

A	Drawn	Date	Name	Title:
	Approved			Can P-Lochung 42 mm DIN

b Aufnahme in SW a modified Iss. Change	11.02.08 18.10.05 Date	HL FG Name	Scale:	metric ---+--- DIN A4	Category:
			1:2		Finish-/Aperture drawing
			Drawing No.:		
					ENG-00-005079 b
					Import No.: OBERBODENLOCHUNG_P_01_04_75