

D

C

B

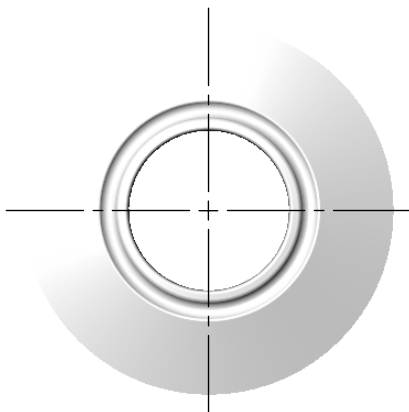
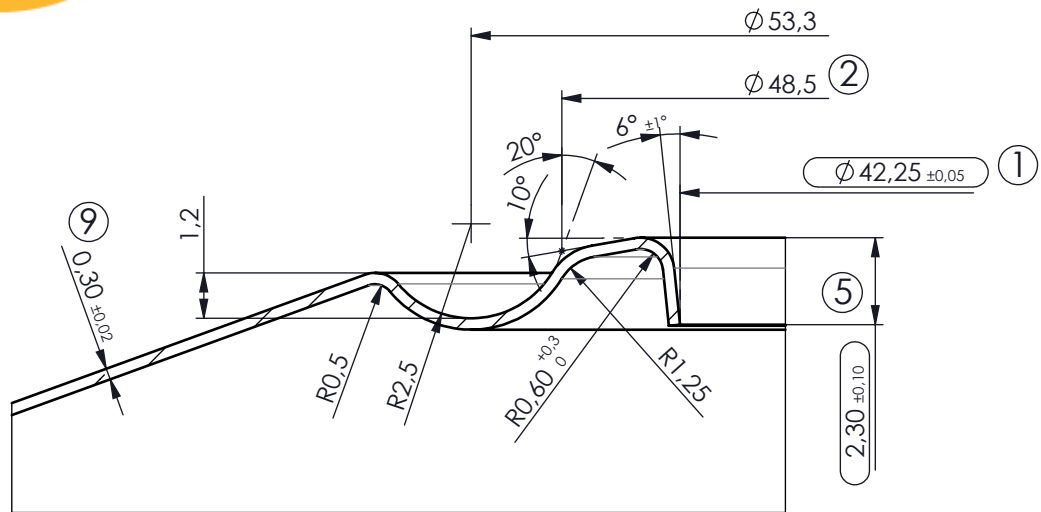
A

D

C

B

A



Excerpt from DIN 16901 series 150

Dimension	0-3	3-6	6-10	10-15	15-22	22-30	30-40	40-53	53-70
Tolerance	±0,15	±0,17	±0,2	±0,24	±0,28	±0,33	±0,39	±0,47	±0,58

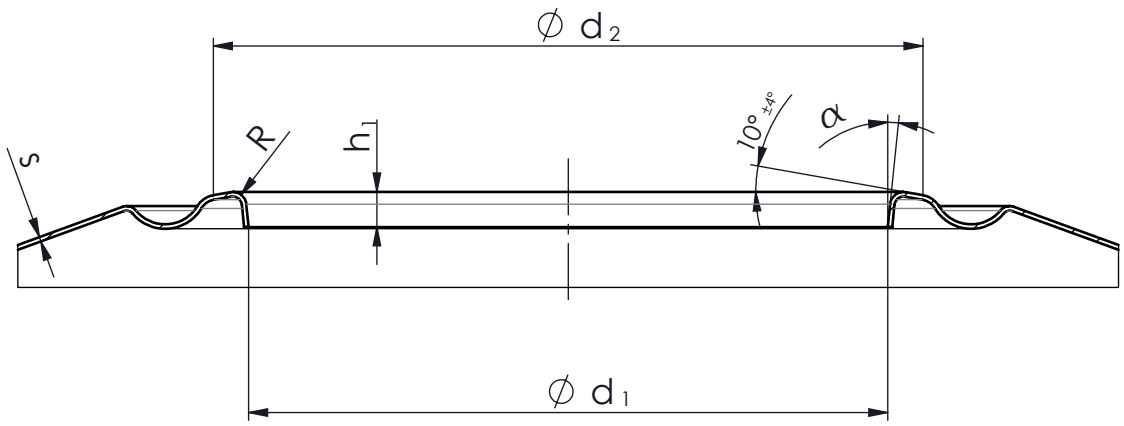
	Current Neck No.	NCK-00-000004	Sheet 1
	Prev. Neck No.	DIN 2035 - P	
	3D-Modell No.	ENG-00-010370	2 Sh.

				Material		This drawing is the property of Bericap Germany. It is confidential and must not be copied or shown to third parties.	
Tolerances unless otherwise stated: DIN 16 901 150		Surface: DIN ISO 1302 (Ra)		Title: Can P-Lochung 42 mm DIN		Category: Finish-/Aperture drawing	
Drawn	Date	Name		Drawing No.:			
Approved	28.07.05	Lohmann		ENG-00-005079 b			
Scale: 1:1		metric		Import No.:			
b Aufnahme in SW a modified Iss. Change		11.02.08 HL 18.10.05 FG Date Name		DIN A4		OBERBODENLOCHUNG_P_01_04_75	

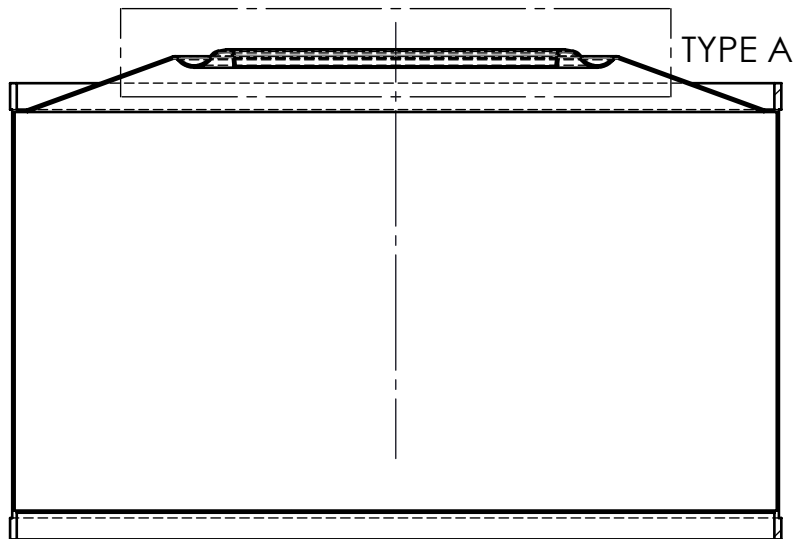
3

2

1



TYPE A



Excerpt from DIN 16901 series 150

Dimension	0-3	3-6	6-10	10-15	15-22	22-30	30-40	40-53	53-70
Tolerance	±0,15	±0,17	±0,2	±0,24	±0,28	±0,33	±0,39	±0,47	±0,58

	Current Neck No.	NCK-00-000004	Sheet
	Prev. Neck No.	DIN 2035 - P	
	3D-Modell No.	ENG-00-010370	2 Sh.

Material

Tolerances unless otherwise stated:
 DIN 16 901 150 DIN ISO 1302 (Ra)

This drawing is the property of Bericap Germany. It is confidential and must not be copied or shown to third parties.

Drawn	Date	Name	Title:
	28.07.05	Lohmann	
Approved	Date	Name	P-Lochung 42 mm DIN
	22.10.08	Lohmann	

b Aufnahme in SW a modified Iss. Change	11.02.08 18.10.05 Date	HL FG Name	Scale:	metric DIN A4	Category:
			1:2		Finish-/Aperture drawing
			Drawing No.:		
					ENG-00-005079 b
					Import No.: OBERBODENLOCHUNG_P_01_04_75

Product specification

Product hierarchy / Date
1162110 / 17.06.2021

Page 1 / 2

General product information

Product hierarchy: 1162110

Product description: P2 K CL
Extendable press-in closure for tin plate containers, two piece, for 42mm DIN-piercing, PE made screw cap, cross linked pull-up spout with tamper evidence tear-off seal and conical insertion edge. Screw cap with bore seal and pull-up handle.

Weight: 11,17 G +/-10%

Customer drawing no.: ENG-00-004470

Customer drawing tolerances relate to the results of measurement averages, except for ovality. Ovality tolerances depend upon transport conditions, packaging media, vibration and temperature.

Neck material: Metal

Neck finish drawing no.: ENG-00-005079

Containers must meet Mus Verpakkingen BV drawing specifications.

Product properties

Components:	Resin LLDPE	Resin HDPE General	Resin Additive
Pack. unit:	575X380X373 mm		
Qty/pack. unit:	1.800	0	0
Pallet:	1200X800X130 mm		
Pack. units/pallet	20	0	0

Storage

Min. storage temperature: 10 °C
Max. storage temperature: 28 °C

Pallets should be stored in a clean dry area away from UV light, smells and high temperature variations. Pallets should not be double stacked. Closures are to be used within 12 months after date of delivery.

The characteristics of the product are additionally fixed in separate process-, inspection- and sampling plans. Not subject to our automated up-date service.

Application

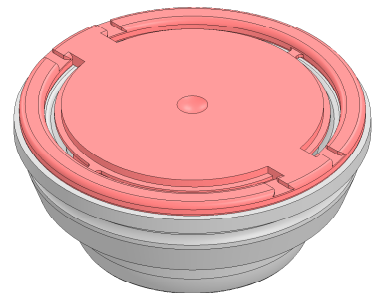
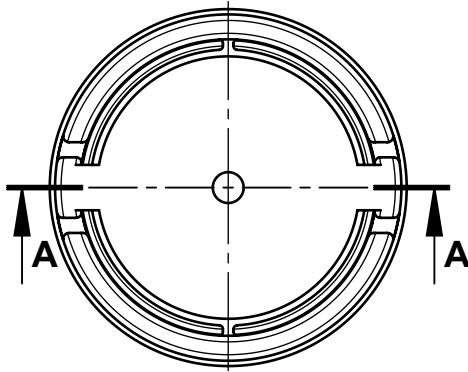
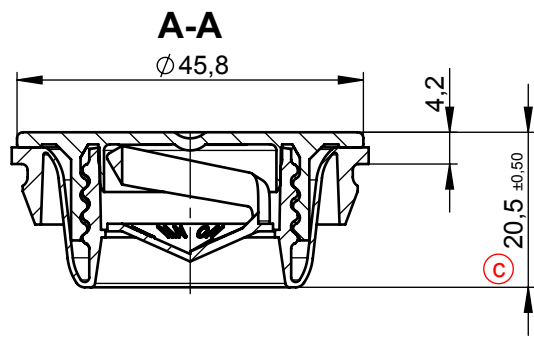
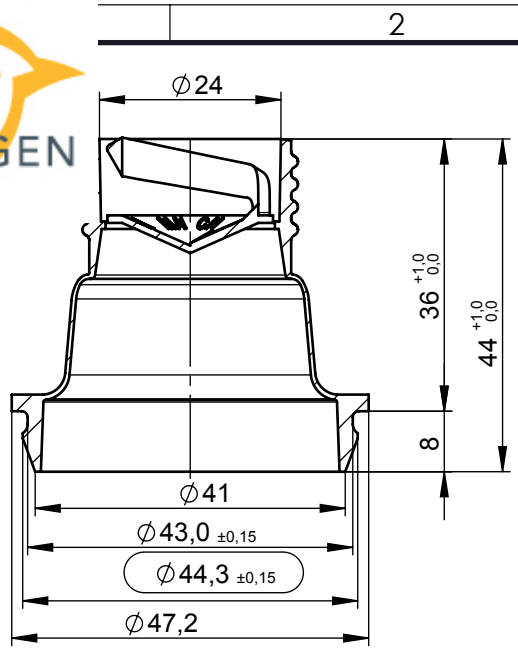
Min. application temperature: 18 °C

Max. application temperature: 28 °C

Minimum head pressure: 300,0 N

Meeting the above requirements does not absolve the customer from the requirement to set up the capping equipment as required and from carrying out compatibility tests between the applied closure and filled product. Technical assistance can be provided by Mus Verpakkingen BV.

The characteristics of the product are additionally fixed in separate process-, inspection- and sampling plans. Not subject to our automated up-date service.



— gauge dimension

Postmolding ovality dimensions can be influenced by packaging and logistics
Nominal Diameters are defined as mean of two rectangular measurements

Tolerances unless otherwise stated:

Dimension	0-3	3-6	6-10	10-15	15-22	22-30	30-40	40-53	53-70
Tolerance	$\pm 0,15$	$\pm 0,17$	$\pm 0,2$	$\pm 0,24$	$\pm 0,28$	$\pm 0,33$	$\pm 0,39$	$\pm 0,47$	$\pm 0,58$

		for internal use only		Sheet
		Proj.No.		1
		Art.No. PAR-00-000207		1 Sh.
		3D-Modell No. ENG-00-063929 _		

This drawing is the property of Bericap Germany. It is confidential and must not be copied or shown to third parties. This drawing is an uncontrolled document and is not subject to any automated update service

A	c change tolerance $\pm 0,2$ in $\pm 0,5$ b updated parts a Title block modified - Iss. Change	04.03.20 11.10.19 08.03.12 10.10.05	PS PS JG AT	Date Name	Tolerance ISO 8015	Surface: DIN EN ISO 1302 (Ra)	Category
					Customer drawing		
					Drawn 25.07.05 Approved 04.03.20	Name Lohmann, H. Sauthof, P.	Title
					Screw cap with flex spout P2 K		
Scale: 1:1		metric	Master-Producthierarchy No.				
			1162101				
			Drawing No.				
			ENG-00-004470 c				