

SPECIFICATION AND FEATURES

DESCRIPTION			
Can size:	Ø96 X 42 x 154	Customer:	-
Closure:	PLK REL 24	Type:	Rectangle can
Type:	Cap 24 REL UN	Pallet type:	Euro
Coating:	plain		
BODY		TOP	
Material	Tinplate	Material	Tinplate
Thickness	0.20	Thickness	0.30
Tin coating	E2,8/2,8	Tin coating	E2.8/2.8
Code	6421	Code	-
Side seam	Welded	Compound type	TDV 772
Side stripe inside	-	Coating inside	plain
Coating inside	plain	Coating	plain
Coating outside	plain/lacquered/decorated	Coating outside	plain
BOTTOM			
Material	Tinplate		
Thickness	0.30		
Tin coating	E2.8/2.8		
Code	954QX		
Compound type	TDV 772		
Coating inside	plain		
Coating outside	plain		

Remark: Tinplate according to EN10202

CAPACITIES, WEIGHTS AND DIMENSIONS

H	Mass (g) +/- 5% (g)	Nom. volume (ml)	Brimfull volume acc. ISO 90/2 (ml)	Label height (mm)	Height over double seam (mm)
154	72.3	500	579	148,65 ± 0,65	154,25 ± 0,35

OTHER

- Closure has to be pressed in with a pneumatic driven flat pusher plate. Please beware that enough air pressure is used
- UN mark in bottom: UN/3A1/Y1.2/200--/NL/IMP-L2608

CONTAINER PERFORMANCE

As product compatibility is the responsibility of the customer, Ardagh gives no fit for purpose warranty and recommends that pack tests are performed prior to filling and would be pleased to provide technical support on this subject prior to purchase

The Quality Assurance System has been approved by Lloyd's Register Quality Assurance ISO 9000

Modification of specifications reserved

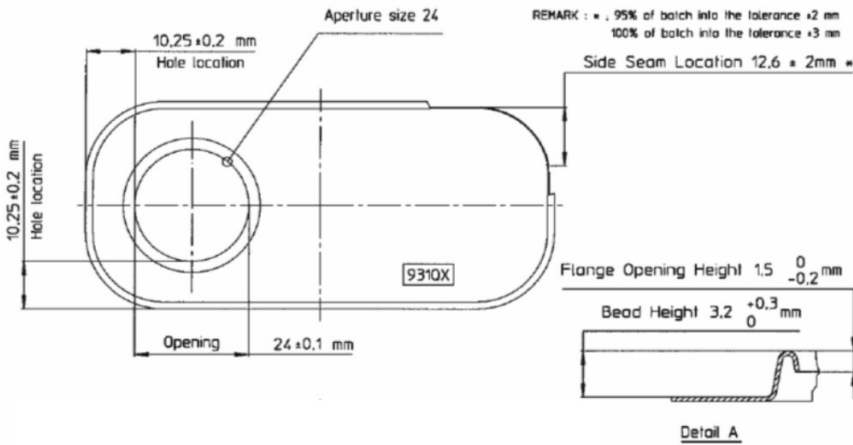
Mus Verpakkingen BV
Customer information

Date: 5-6-2014
Author:

Size: Ø96 X 42 x 154
Type: Cap 24 REL UN

-

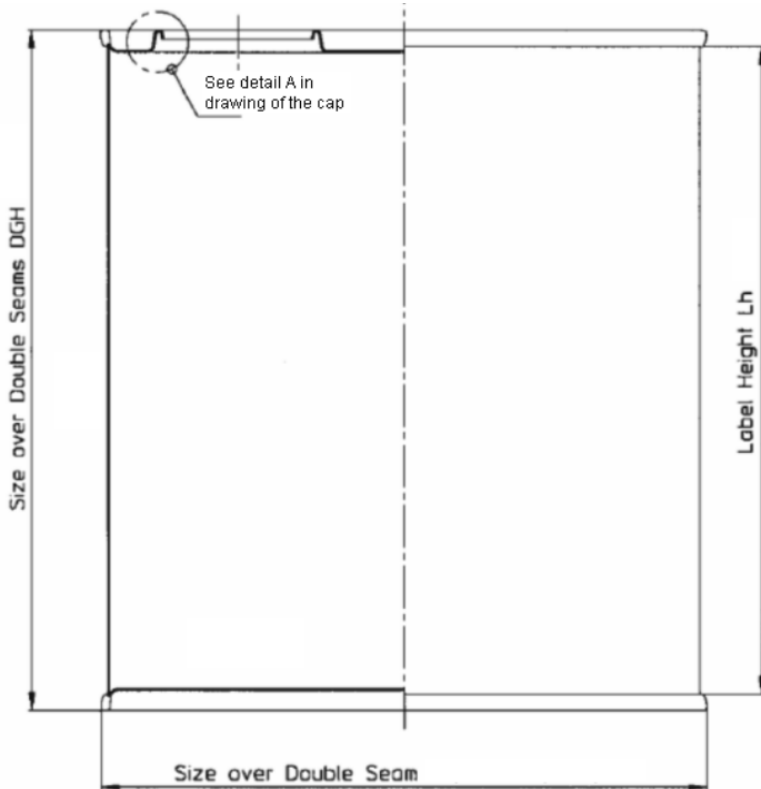
Drawings



CAP

Code: -

Size over double seam	
top part	98,75 x 44,5 ± 0,4
bottom part	98.75 x 44.5 ± 0,4



Code: 6421

The Quality Assurance System has been approved by Lloyd's Register Quality Assurance ISO 9000

Modification of specifications reserved

Mus Verpakkingen BV
Customer information

Date: 5-6-2014
Author:

Size: Ø96 X 42 x 154
Type: Cap 24 REL UN

-

Packaging details

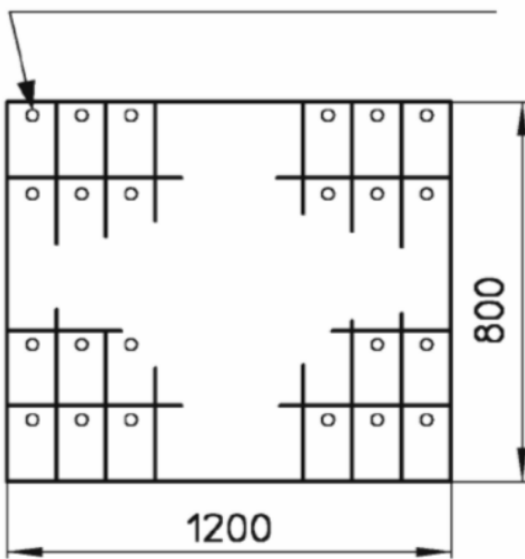
Pallet type: Euro
 Packaging method: Cans in layers, separated by cardboard sheets
 Coverage: Stretch film

Can height	no. of cans per layer	no. of layers	Total no. of cans per pallet	Total pallet height
154	26x8=208	7	1456	1285

Remark(s):

Pattern

Note position of nozzles

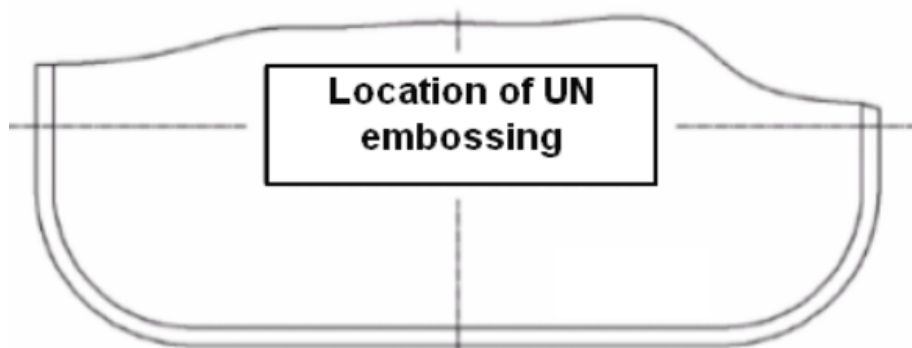


Top view of packaging

The Quality Assurance System has been approved by Lloyd's Register Quality Assurance ISO 9000		Modification of specifications reserved	
Mus Verpakkingen BV Customer information	Date: 5-6-2014	Size: Ø96 X 42 x 154	-
	Author:	Type: Cap 24 REL UN	

Appendix: Additional information

Remarks:



The Quality Assurance System has been approved by Lloyd's Register Quality Assurance ISO 9000		Modification of specifications reserved	
Mus Verpakkingen BV Customer information	Date: 5-6-2014 Author:	Size: Ø96 X 42 x 154 Type: Cap 24 REL UN	-