

Aerosol can specifications

15.0 bar

Ø65/60 x h

Dimensions: Ø65/60 x h
Test pressure: 15.0 bar
Description: Aerosol can, necked-in
Internal lacquer: Internally plain
Customer: General

Cans produced according to: FEA - standards of September 1993 and corresponding EN norms ISO 90-3, TRG 300, EC 75/324 amended by EC 94/1 and 2008/47/EC and 2013/10/EU, European norm 10333

Material: Tin plate according to EN10202: 2001
Sideseam: WIMA welded, with or without nitrogen

Pressure specification: Minimal deformation pressure: 15 bar
 Minimal burst pressure: 18 bar

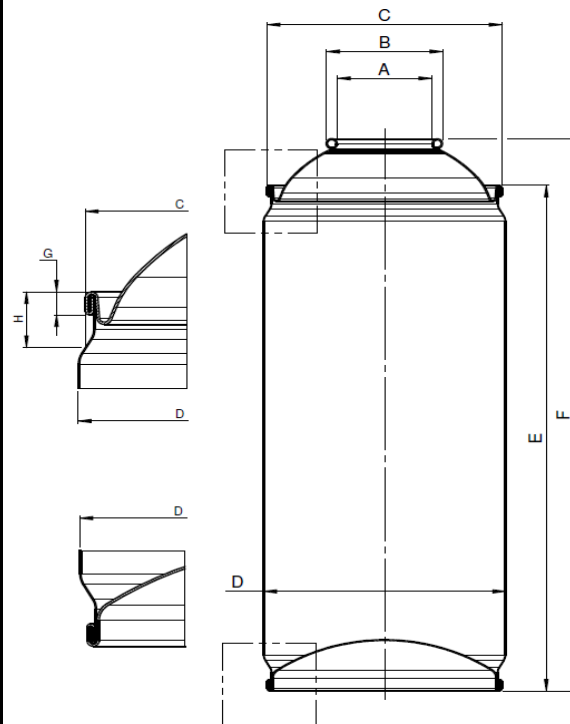
Print: If, multicolored offset print (print inks free of heavy metals) plus clear varnish

Tinplate specifications:

	Body	Top	Bottom
Tinning	E 2.0 / 2.0	D 4.0 / 2.8	E 2.8 / 2.8
Finish	Fine Stone	Fine Stone	Fine Stone
Thickness (mm)	See 'data per can height'	0.33-0.36	0.33-0.36

Dimensions:

	Nominal	Tolerance
Body diameter (D)	65.9	± 0,3
1-inch opening internal (A)	25.4	± 0,1
1-inch opening external (B)	31.2	± 0,2
Contact height	4.0	± 0,15
Overseam diameter of cone (C)	63.2	± 0,3
Seam length of cone (G)	3.3	± 0,15
Tangent line (H)	6.3	+0,5 / -0,0
Snaplock diameter (J)	n.a.	
Snaplock depth (K)	n.a.	



Data per can height:

	Nominal height 103.5	122	157	195	240	300	Tolerance
Height over double seam (E)	103.5	122	157	195	240	300	± 0.5 mm
Overall height (F)	117	135.5	170.5	208.5	253.5	313.5	± 0.7 mm
Nom. fill volume (liq. prop.)	250	300	400	500	600	750	
Nom. fill vol. (compr. gas)	200	250	300	400	500	600	
Brimfull capacity (ml)	345	405	520	650	800	1000	see EN15007
Body thickness (mm)	0.17	0.17	0.17	0.17	0.18	0.18	
Weight (g)	56.3-62.3	61.2-67.6	70.4-77.8	80.4-88.8	95.9-106.0	112.6-124.5	

Internal lacquer system(s):

Not lacquered
Body: -
Side stripe: -
Top: -
Bottom: -

External lacquer:

Body: White/transparant primer + Decoration + glossy/mat finishing lacquer
Side stripe: None / With side stripe
Top: Clear / White varnish
Bottom: Clear / White varnish

Container performance:

Each new combination of aerosol specification and product must be testpacked by the customer, unless otherwise agreed between Mus Verpakkingen BV and the customer. All can sizes are 100% tested on micro leakage and a pressure of 10 bar. Micro leakage is here defined as 3 cm³/min gas leakage at a pressure of 10 bar.

Delivery:

Cans in compression pack on one-way or returnable pallets with stretch film

Palletization:

Can size	Euro pallet (1200x800)		Industry pallet (1200x1000)		TDV pallet (1420x1120)	
	No. of cans	Total height	No. of cans	Total height	No. of cans	Total height
Ø65/60 x 103.5			2312	1073		
Ø65/60 x 122					3040	1229
Ø65/60 x 157	1326	1187	1734	1187	2280 [2660]	1168 [1339]
Ø65/60 x 195	1105	1207	1445	1207	1900 [2280]	1188 [1396]
Ø65/60 x 240	884	1178	1156	1178	1520 [1900]	1159 [1413]
Ø65/60 x 300	663 [884]	1105 [1418]	867	1105	1140 [1520]	1086 [1399]

Remark: [...] = no. of cans when a Megatrailer is used for transport

Rev. date: 18-2-2014

Date of issue: 25-7-2016
 Expiry date: 25-7-2017