

SPECIFICATION AND FEATURES

| | | | |
|--------------------|---------------------------|-----------------|----------------------|
| DESCRIPTION | | | |
| Can size: | Ø114 X 58 x h | Customer: | - |
| Closure: | PLK REL 32 | Type: | Rectangle can |
| Type: | Cap 32 REL UN | Pallet type: | TDV |
| Coating: | plain | | |
| BODY | | TOP | |
| Material | Tinplate | Material | Tinplate |
| Thickness | 0.200 | Thickness | 0.30 |
| Tin coating | E2,8/2,8 | Tin coating | E2.8/2.8 |
| Code | 6372 | Code | 931QX |
| Side seam | Welded | Compound type | TDV 772 |
| Side stripe inside | - | Coating inside | plain |
| Coating inside | plain | Coating outside | plain |
| Coating outside | plain/lacquered/decorated | | |
| BOTTOM | | | |
| Material | Tinplate | | |
| Thickness | 0.24 | | |
| Tin coating | E2.8/2.8 | | |
| Code | 954QX | | |
| Compound type | TDV 772 | | |
| Coating inside | plain | | |
| Coating outside | plain | | |

Remark: Tinplate according to EN10202

CAPACITIES, WEIGHTS AND DIMENSIONS

| H | Mass (g) +/- 5% (g) | Nom. volume (ml) | Brimfull volume acc. ISO 90/2 (ml) | Label height (mm) | Height over double seam (mm) |
|-----|---------------------------|------------------------|--|-------------------------|------------------------------------|
| 70 | 71.8 | 250 | 406 | 64.25 ± 0,65 | 70.25 ± 0,35 |
| 105 | 88.7 | 500 | 641 | 99.25 ± 0,65 | 105.25 ± 0,35 |
| 186 | 127.5 | 1000 | 1137 | 180.25 ± 0,65 | 186.25 ± 0,35 |

OTHER

- Closure has to be pressed in with a pneumatic driven flat pusher plate. Please beware that enough air pressure is used
- UN mark in bottom: UN/3A1/Y1.2/150--/NL/IMP-L579

CONTAINER PERFORMANCE

As product compatibility is the responsibility of the customer, Mus Verpakkingen BV gives no fit for purpose warranty and recommends that pack tests are performed prior to filling and would be pleased to provide technical support on this subject prior to purchase

The Quality Assurance System has been approved by Lloyd's Register Quality Assurance ISO 9000

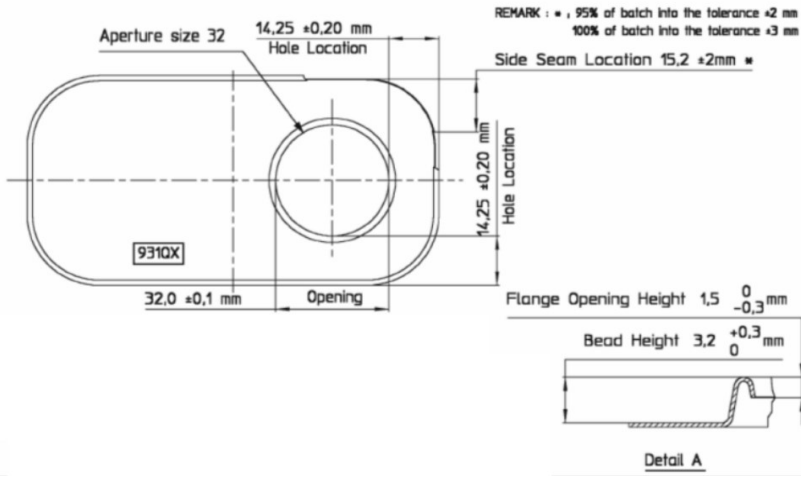
Modification of specifications reserved

Date: 29-1-2014
Author:

Size: Ø114 X 58 x h
Type: Cap 32 REL UN

-

Drawings

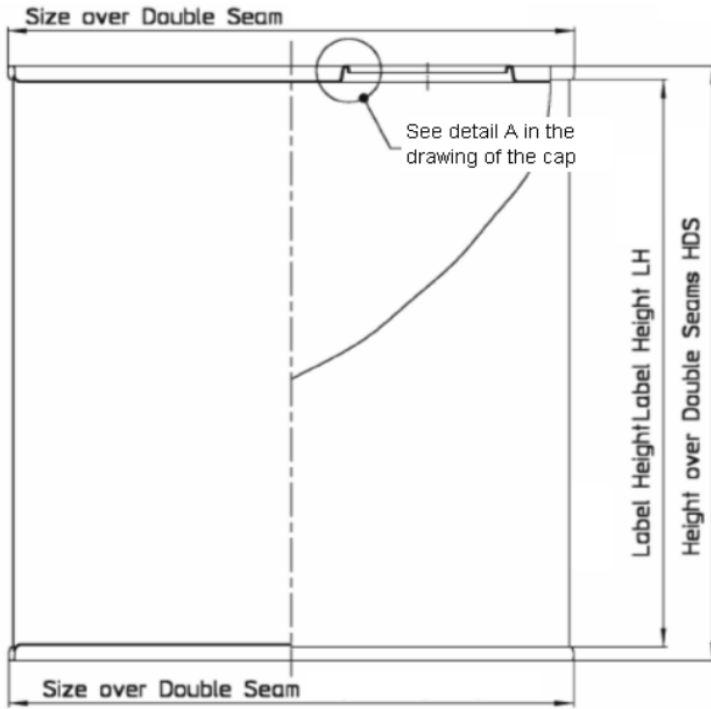


CAP

Code: 931QX

Size over double seam

| | |
|-------------|--------------------|
| top part | 116,8 x 60,6 ± 0,4 |
| bottom part | 116,4 x 60,2 ± 0,4 |



CAN DRAWING

Code: 6372

The Quality Assurance System has been approved by Lloyd's Register Quality Assurance ISO 9000

Modification of specifications reserved

Date: 29-1-2014
 Author:

Size: Ø114 X 58 x h
 Type: Cap 32 REL UN

-

Packaging details

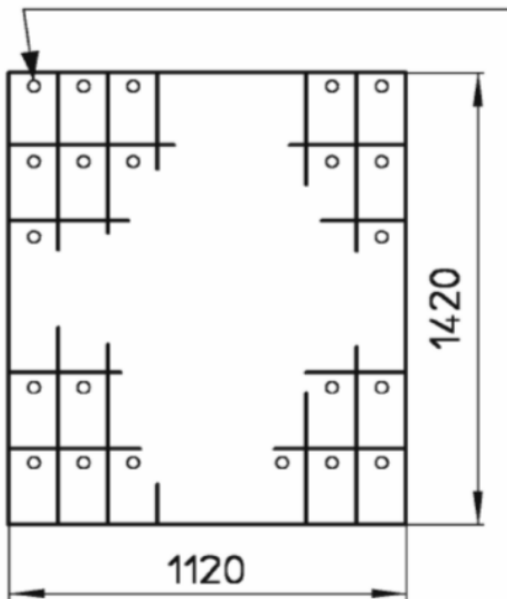
Pallet type: TDV
 Packaging method: Cans in layers, separated by cardboard sheets
 Coverage: Stretch film

| Can height | no. of cans per layer | no. of layers | Total no. of cans per pallet | Total pallet height |
|------------|-----------------------|---------------|------------------------------|---------------------|
| 70 | 12x18=216 | 14 | 3024 | 1120 |
| 105 | 12x18=216 | 9 | 1944 | 1075 |
| 186 | 12x18=216 | 5 | 1080 | 1060 |
| 186 | 12x18=216 | 6 | 1296 | 1249 |

Remark(s): For can size 114x58x186 there are 2 possible packaging methods (5 or 6 layers)

Pattern

Note position of nozzles



Top view of packaging

The Quality Assurance System has been approved by Lloyd's Register Quality Assurance ISO 9000

Modification of specifications reserved

Date: 29-1-2014

Author:

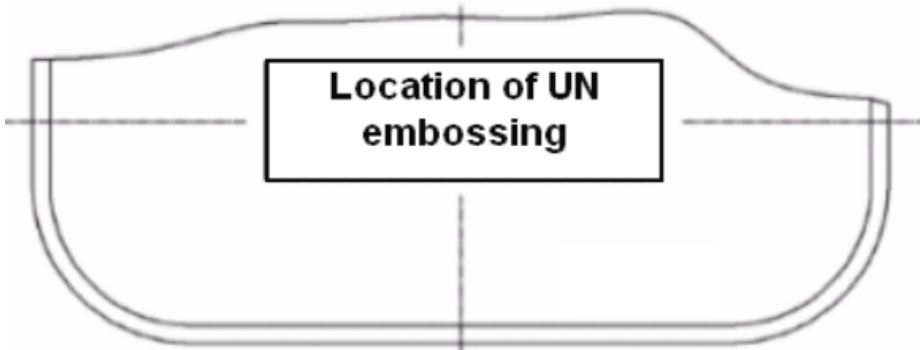
Size: Ø114 X 58 x h

Type: Cap 32 REL UN

-

Appendix: Additional information

Remarks:



| | | | |
|---|-----------|---|---|
| The Quality Assurance System has been approved by Lloyd's Register Quality Assurance ISO 9000 | | Modification of specifications reserved | |
| Date: | 29-1-2014 | Size: Ø114 X 58 x h | - |
| Author: | | Type: Cap 32 REL UN | |