

Product specification

Product hierarchy / Date
1142308 / 02.11.2011

Page 1 / 2

General product information

Product hierarchy: 1142308
 Product description: VUL/SK24/12 CR
 Closure fitting for tin plate containers, two piece, for 24mm
 DIN-piercing, PE made. Base with tamper evidence tear-off seal and universal
 insertion edge. Screw cap ergonomic shaped, with bore seal.
 Weight: 5,49 G +/- 10 %
 Customer drawing no.: ENG-00-001069

Customer drawing tolerances relate to the results of measurement averages, except for ovality. Ovality tolerances depend upon transport conditions, packaging media, vibration and temperature.

Neck material: Metal
 Neck finish drawing no.: ENG-00-000544

Containers must meet MUS drawing specifications.

Child resistance is in accordance with Standard ISO 8317 (2003). The distributor / bottler of the packaging is responsible for guaranteeing the function of child resistance for the total packaging (container, filling material, closure) over the corresponding life span. Mus Verpakkingen BV points out explicitly that aggressive filling materials can affect the function of child resistance of the closure negatively. Child resistance function has to be examined by the distributor / bottler, before the total packaging is launched to the market.

Product properties

Components:	Resin LDPE	Resin HDPE General	Resin additive
Pack. unit:	575X380X373 mm		
Qty/pack. unit:	3.500	0	0
Pallet:	1200X800 mm		
Pack. units/pallet	20	0	0

Storage

Min. storage temperature: 10 °C
 Max. storage temperature: 28 °C

Pallets should be stored in a clean dry area away from UV light, smells and high temperature variations. Pallets should not be double stacked. Closures are to be used within 12 months after date of delivery.

The characteristics of the product are additionally fixed in separate process-, inspection- and sampling plans. Not subject to our automated up-date service.

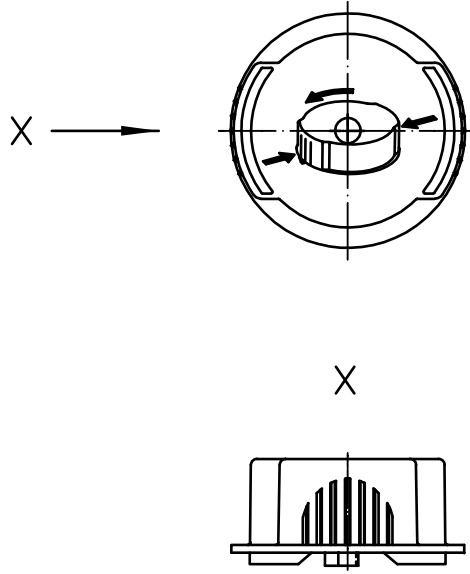
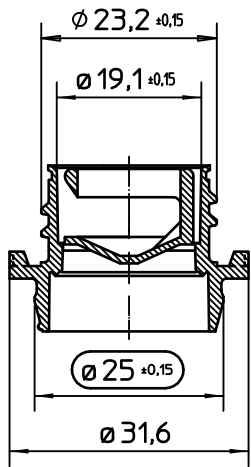
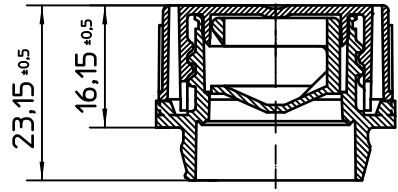
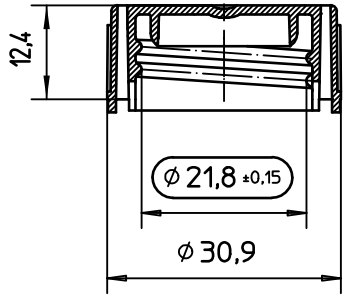
Application

Min. application temperature: 18 °C
Max. application temperature: 28 °C

Maximum head pressure/Topload: 250 N

Meeting the above requirements does not absolve the customer from the requirement to set up the capping equipment as required and from carrying out compatibility tests between the applied closure and filled product. Technical assistance can be provided by MUS Verpakkingen BV.

The characteristics of the product are additionally fixed in separate process-, inspection- and sampling plans. Not subject to our automated up-date service.



- gauge dimension

Excerpt from DIN 16901 series 150 Postmolding ovality dimensions can be influenced by packaging and logistics
Nominal Diameters are defined as mean of two rectangular measurements

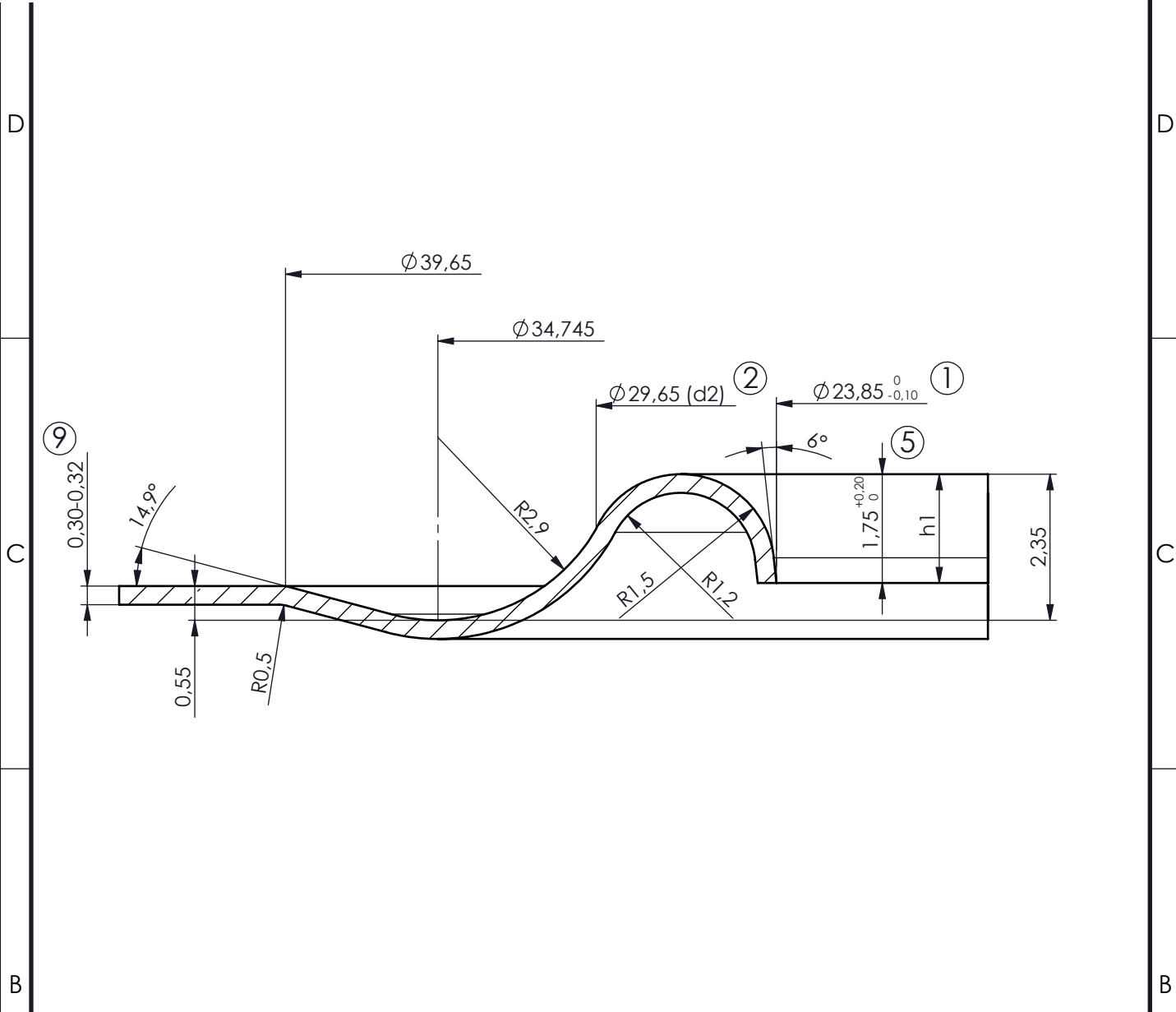
Dimension	0-3	3-6	6-10	10-15	15-22	22-30	30-40	40-53	53-70
Tolerance	±0,15	±0,17	±0,2	±0,24	±0,28	±0,33	±0,39	±0,47	±0,58

Prod-Hierarchy No. 1142308		Sheet
Art.No. PAR-00-0000380		X
Proj.No.		X Sh.

Tolerances unless otherwise stated:	Surface:	This drawing is the property of Bericap Germany. It is confidential and must not be copied or shown to third parties.
DIN 16 901 150	DIN ISO 1302 (Ra)	

Drawn	Date	Name	Title: Verschraubungsgarnitur [VU] VUL / SK24/12 CR-3
Approved			

Scale:	metric 	Category:	Customer drawing
1:1 (1:1)		Drawing No.:	ENG-00-001069 a
Iss.	Change	Date	Name



Excerpt from DIN 16901 series 150

Dimension	0-3	3-6	6-10	10-15	15-22	22-30	30-40	40-53	53-70
Tolerance	±0,15	±0,17	±0,2	±0,24	±0,28	±0,33	±0,39	±0,47	±0,58

Current Neck No.	NCK-00-000002	Sheet	
	Prev. Neck No.		DIN 2035 - L
	3D-Modell No.	ENG-00-012990	1 Sh.

Fax: +49 (0) 6139/2902-182 Material

Tolerances unless otherwise stated: DIN 16 901 150 DIN ISO 1302 (Ra) This drawing is the property of Bericap Germany. It is confidential and must not be copied or shown to third parties.

Drawn	Date	Name	Title:
Approved			Finish/Aperture L-Lochung 24 mm DIN

Scale:	metric	Category:
1:0.1		Finish-/Aperture drawing
DIN A3		Drawing No.:
		ENG-00-000544 b
		Import No.:
		OBERBODENLOCHUNG_L_24_04_89

b	Toleranz ergänzt	25.09.09	PS
a	Aufnahme in SW	02.07.08	HL
Iss.	Change	Date	Name